

# What's New in SolidWorks 2010



1



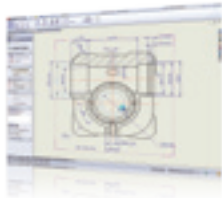
## SOLIDWORKS SUSTAINABILITYXPRESS

SolidWorks® SustainabilityXpress considers how and where materials are produced, parts are manufactured, and products are used and discarded.

### BENEFIT:

Instantly understand the environmental impact of your SolidWorks design in real time.

2



## RAPID DIMENSION FOR DRAWING DETAILING

With the new Rapid Dimension tool, a dimension manipulator appears when dimensions are inserted in drawing views. The manipulator automatically spaces the dimensions evenly, saving you time and effort.

### BENEFIT:

Quickly and easily create manufacturing-ready drawings.

3



## IMPROVED MIRROR COMPONENTS IN ASSEMBLY

The new MirrorComponent, which is part of the FeatureManager® design tree, maintains the position of mirrored components relative to seed components, simplifying workflow and management.

### BENEFIT:

Design and manage assemblies faster and with more flexibility.

4



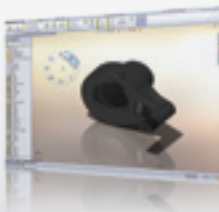
## MULTIBODY SUPPORT FOR SHEET-METAL PARTS

SolidWorks 2010 simplifies the creation of complex sheet-metal designs. This new functionality lets you incorporate designs that include other sheet-metal or weldment parts.

### BENEFIT:

Expand your sheet-metal designs to incorporate weldments or other sheet-metal parts.

5



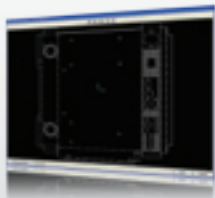
## MOUSE GESTURE HEADS-UP USER INTERFACE

By creating a mouse gesture as a shortcut to executing a command, SolidWorks 2010 lets you keep your eye on your design. The customized gestures for drawings, assemblies, parts, and sketches will let you think more about your design and less about navigating your CAD application.

### BENEFIT:

Increase design efficiency by allowing immediate access to frequently used functionality with just a slight movement of the mouse.

6



### SHEET-METAL EXPORT TO DXF/DWG ENHANCEMENTS

The new DXF/DWG PropertyManager exports sheet-metal files to .dxf or .dwg files, speeding the creation of files for manufacturing operations. This tool allows you to confirm and edit what will be contained in the export file so you can quickly remove unwanted items, such as bend lines or the edges of countersunk holes.

#### BENEFIT:

Allow real-time verification and editing of what is being exported and drastically decrease the number of export steps.

7



### CONFIGURATION PUBLISHER

The Configuration Publisher lets you use rules to define the configurations of a model. This improves flexibility and lets you create more configurations on the fly. Automatically uploading designs to 3D ContentCentral® allows suppliers to quickly share their product models.

#### BENEFIT:

Create configurations and share them by automatically uploading your designs to 3D ContentCentral.

8



### EVENT-BASED MOTION SIMULATION

Now you can create motion simulations based on events and actions, in addition to time. Actions can be triggered by the completion of a previous task, by the activation of a motion sensor, or by time. Event-based simulations give you greater flexibility, especially in the early design stage when timings are not known.

#### BENEFIT:

Use event sequencing to validate your machine's operation while gaining greater design and analysis flexibility.

9



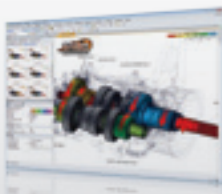
### IMPROVED CONFIGURATION SUPPORT IN SOLIDWORKS ENTERPRISE PDM

SolidWorks Enterprise PDM now facilitates revisions of multiple part numbers within a single file by using configurations as unique part numbers. Enhance collaboration and improve efficiency through the flexible revisioning of configurations.

#### BENEFIT:

More flexible management and collaboration for configurations.

10



### 3DVIA COMPOSER SUPPORT FOR SOLIDWORKS CONFIGURATIONS

SolidWorks configurations are now supported in 3DVIA Composer, enabling you to easily repurpose your SolidWorks data to create content-rich documentation.

#### BENEFIT:

Dramatically reduce documentation time by repurposing SolidWorks configurations.



Dassault Systèmes SolidWorks Corp.  
300 Baker Avenue  
Concord, MA 01742 USA  
Phone: 1 800 693 9000  
Outside the US: +1 978 371 5011  
Email: [info@solidworks.com](mailto:info@solidworks.com)  
[www.solidworks.com](http://www.solidworks.com)

SolidWorks, 3D Content Central, and 3D VIA are registered trademarks of Dassault Systèmes, or subsidiaries. FeatureManager is a jointly owned trademark of Dassault Systèmes SolidWorks Corp. All other company and product names are trademarks or registered trademarks of their respective owners. ©2009 Dassault Systèmes. All rights reserved. MKSWDSNG0609